

PART OF SEC. 31-32, T.7N., R.3E., S.L.B. & M.
EVERGREEN PARK SUBDIVISION NO. 1

TAXING UNIT: 58

IN WEBER COUNTY

SCALE 1" = 200'

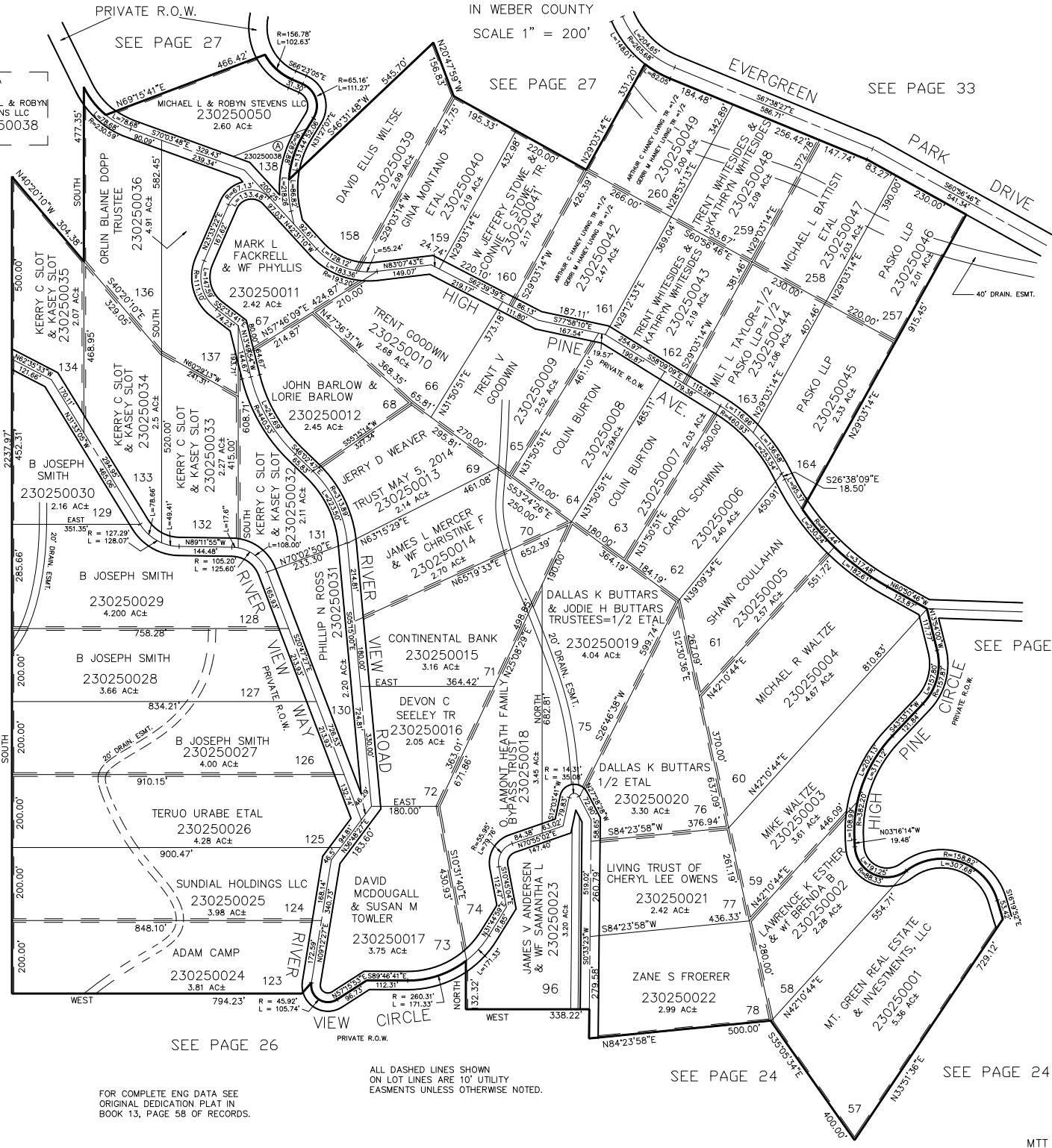
PRIVATE R.O.W.

SEE PAGE 27

SEE PAGE 27

SEE PAGE 33

A
MICHAEL L & ROBYN
STEVENS LLC
230250038



SEE PAGE 33

SEE PAGE 26

SEE PAGE 28

SEE PAGE 24

SEE PAGE 24

FOR COMPLETE ENG DATA SEE
ORIGINAL DEDICATION PLAT IN
BOOK 13, PAGE 58 OF RECORDS.

ALL DASHED LINES SHOWN
ON LOT LINES ARE 10' UTILITY
EASEMENTS UNLESS OTHERWISE NOTED.